



HAA&D is an international architecture and design studio rooted in the vibrant heart of Berlin, serving discerning clients across Europe and beyond. Founded by Swiss- and Berlin-registered architect Hagar Abiri, our studio has, since 2014, been a hub of innovation, creativity, and excellence.

We specialize in high-end interior design, urbanism, and architecture, blending cutting-edge technology with timeless aesthetics. Our approach is holistic—every project is a dialogue between the physical and digital, the local and global, the present and future.





We believe that architecture is more than just building structures; it's about shaping experiences, communities, and futures. As society evolves at a rapid pace, so too must our environments. We design spaces that are not only beautiful and functional but also adaptable to the ever-changing needs of our clients and the world around us.





custom furniture design is more than a complement to architecture — it is a continuation of the spatial story. Every piece is conceived with a deep understanding of context, function, and materiality. Working closely with highly skilled craftspeople, we translate concepts into one-of-a-kind objects that enrich and refine the spaces they inhabit. Each design, whether stand-alone or part of a larger project, is tailored to meet the client's needs while staying true to the spirit of the space.





We believe in the value of well-made things — in the time, skill, and care that true craftsmanship demands. That's why we collaborate with artisans whose work reflects precision, depth, and a shared respect for materials. Whether working with wood, metal, or textile, we prioritise traditional and innovative techniques alike, ensuring that each item is not only beautiful but built to last.





Our design language is grounded in originality and flexibility. Some pieces are born entirely from scratch; others are adaptations of historical references, cultural motifs, or past designs reimagined for contemporary use. In all cases, the result is authentic and intentional — custom furniture that resonates with its surroundings and elevates everyday experience.









We approach every space as a dynamic environment — one that should evolve with its users over time. Through adaptable layouts, multifunctional elements, and thoughtful detailing, our designs support both current needs and future possibilities. Flexibility is not just a feature, but a mindset: it allows spaces to shift between uses, accommodate change, and remain relevant without compromising on quality or character.











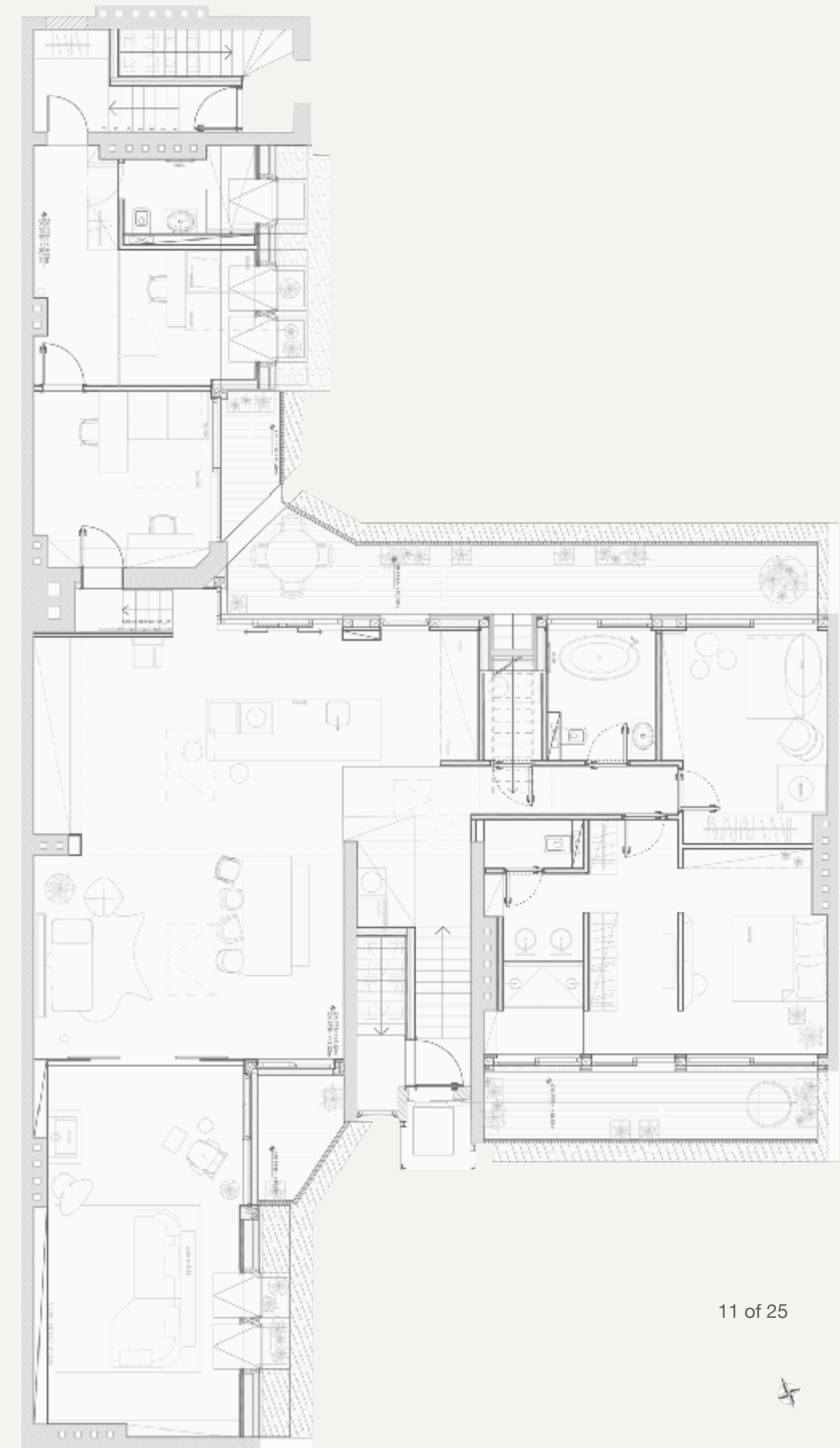




## Eco Urbane Haven.

Amidst the bustling urban landscape, our 'EcoUrbane Haven' (S04) emerges as a serene oasis of tranquility and natural elegance. Crafted with meticulous attention to detail, this rooftop apartment radiates an inviting ambiance characterised by bright, open spaces and a commitment to sustainability.

Our foremost priority was to create an environment that exudes brightness and cleanliness, inviting the outside in. The open floor plan seamlessly integrates every facet of this space, from the stylish, black wood cupboards in the kitchen to the stainless steel island, fostering an air of sophistication in every corner.





Embracing minimalism, each piece of furniture was thoughtfully selected to enhance the apartment's open and airy atmosphere. With a focus on intelligent lighting and cutting-edge ventilation and sound systems, 'EcoUrbane Haven' represents a modern urban dwelling that thrives on both style and sustainability.





Our dedication to environmental consciousness is manifest in the choice of materials & collaborations. Embracing our commitment to local sustainability, natural wood floor & furniture sourced from a nearby family-owned company and local craftsmanship takes centre stage, delivering not only aesthetic charm but also a reduced carbon footprint.





More than a functional space, the bathroom is where we meet ourselves in the most intimate way — a daily ritual of care, reflection, and reset. At HAA&D, we design bathrooms as quiet retreats, inspired by the atmosphere of a private spa. Natural materials, soft lighting, and thoughtful spatial planning come together to create a sense of calm and clarity.



Every element — from the flow of water to the feel of surfaces — is selected to support well-being, transforming the everyday into a personal and restorative experience.







We treat light as a fundamental element of spatial experience — shaping atmosphere, guiding movement, and enhancing materiality. Our lighting plans are carefully integrated from the earliest stages of design, combining natural and artificial sources to support function and mood. Working with high-quality products, cutting-edge lighting technologies, and trusted suppliers, we ensure precision, efficiency, and long-term performance. Whether it's ambient, task, or accent lighting, every fixture is thoughtfully selected and placed to serve both aesthetic and practical goals.







Art plays a vital role in the spaces we design — not as decoration, but as a window. Art opens a view to other realities, ideas, and emotions. It invites reflection, introduces contrast, and adds layers of meaning that architecture alone cannot always express.

At HAA&D, we integrate art thoughtfully into our projects, curating pieces that resonate with the spatial narrative and the people who inhabit it. Working closely with artists and international art consultants, we ensure each work is both site-sensitive and timeless. Whether bold or discreet, figurative or abstract, art becomes part of the architectural dialogue — enhancing the identity of the space and connecting it to something larger than itself.





Urban nest in the heart of Berlin.

In contrast to the chaotic urban environment, the apartment is an island of quietness and softness. While creating the layout, great value was placed on having a bright, open and clean atmosphere.







This approach is echoed in the selection of minimal, purpose-driven furniture, bespoke lighting concepts, and the spatial choreography of the open-plan kitchen. Wood features prominently throughout the apartment's custom carpentry — not only for its warm tactile quality but also for its environmental and psychological benefits. As a renewable material with a low carbon footprint, it supports a more sustainable design ethos while fostering a sense of comfort and grounding in the living space.







Combining modern and traditional, the PR33 project is about constructing new housing units on the rooftop of a building from 1906, located in the heart of Berlin. The concept is inspired by the building's traditional look and crossroad-shaped features. The result is a mélange of traditional and modern - representing old and new intertwined.

Located in the heart of Berlin, this project involved the careful modernisation of a historic building. Our holistic approach ensured that the redevelopment respected the building's heritage while introducing modern, sustainable features tailored to our clients' needs.



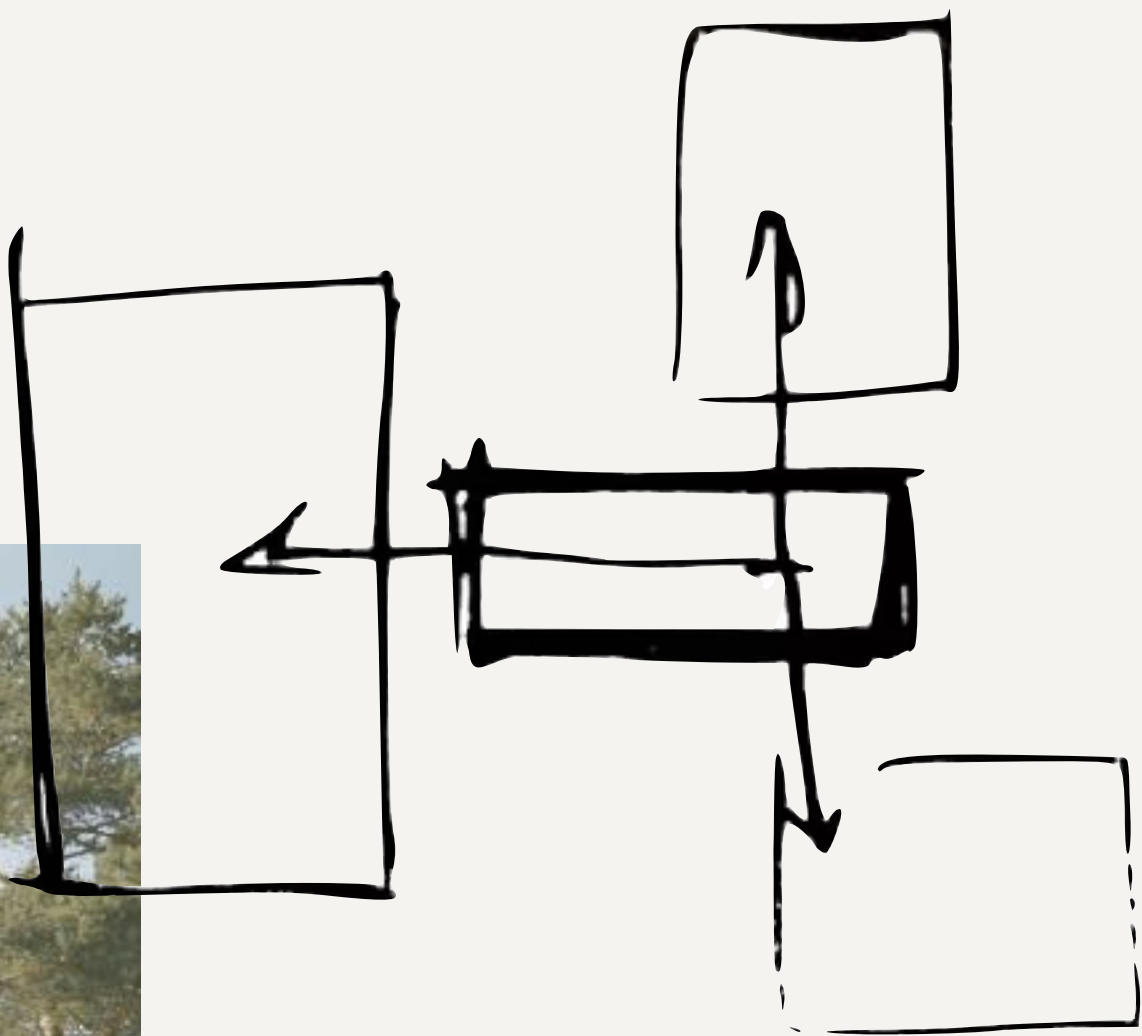


The buildings stand out not only due to their unique location directly at the Spree river, but also their architectural style of the Wilhelminian Era. They accommodate a total of 21 and 24 residential units. The building was erected in the early 1900s, making the project's planning and construction a demanding and sensitive process, which is now executed with utmost care. The goal is to sustain the buildings' former glory while upgrading the properties to highlight the potential of the surrounding urban area. The renovation follows HAA&D's sustainable, eco-friendly values. The rooftop is planned as a low-energy project based on a wooden construction insulated with straw.





The Colorado House single-family house is not only a house but a true home where all the inhabitants can integrate together while still having their privacy if needed.



The building's shape consists of three clean, geometrical forms conveniently connected by the communication zone with a representable staircase. The varied heights of the cuboids and the freely positioned windows reflect the playful nature of the family that will live there. The house keeps an informal character, warmly inviting the residents and the guests inside. The differentiated forms interspersed with vegetation create safe enclosures in the busy neighbourhood.

Situated on a slope, the house takes advantage of the natural conditions, integrating with the surroundings. The ground, structured with multifunctional terraced stairs and cuts, allows natural light to penetrate all the rooms. The interior is flexible, practical and family-oriented. The most important functions are located on the first floor, while the basement is planned for further development, containing convertible spaces such as a home office, guest room and play area for kids.





HAA&D's primary focus lays in architecture which creates a connection point between people and nature. With this in mind, 31 units in 3 different sizes and typologies were designed to blend into the environment, allowing visitors to become a part of the natural surroundings and profit from its regenerative effects.

Backed up by research on the surrounding animal and plant life, all units and the park are planned with sustainable values, eco-friendly methods and systems. These range from the used lighting to used materials, keeping in mind a high-end standard and user experience.

The project is a total-design concept, from masterplan to furniture and light

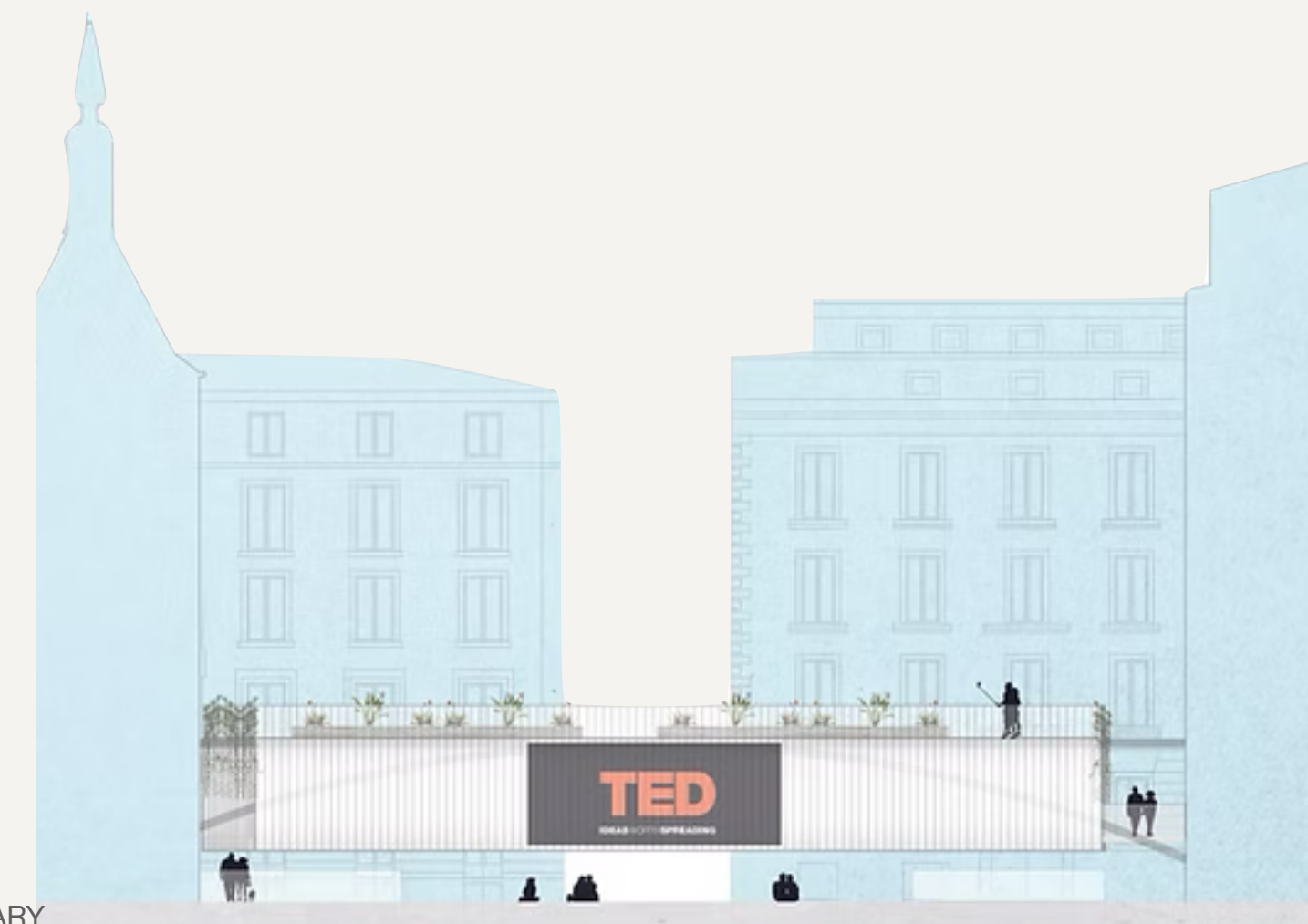




## A LIBRARY IS NOT A PLACE FOR BOOKS.

It is a place where people can learn and evolve, it is a place where information is shared, and where stories are told. It is a place that connects the past with the present in order to promote a better future.

The presented design of the Bridge, shifts the focus from books to people, enabling the creation of social bonds within its walls, and outside, in the public space, where knowledge and experience can be shared and exchanged through group work, discussions, open public lectures, and artistic performances.





Photos Credit:

Giulia Maretti  
Sabine Zoltnere  
Fausto Torelli Tulissi

[office@hagarabiri.com](mailto:office@hagarabiri.com)  
[www.hagarabiri.com](http://www.hagarabiri.com)  
+49(0)15225366260

Stubbenkammerstr.4  
10437 Berlin

Linkedin: HAA&D  
Instagram: @haad\_architects



HAA&D® Berlin 2025